



**ROSE**

A Phoenix Mecano Company



**Your Partner for  
HMI- and automation solutions**

## **ROSE Systemtechnik GmbH in Porta Westfalica**

In association with Phoenix Mecano AG, Switzerland, we develop and produce high-quality industrial enclosures and system solutions for a wide variety of sectors, such as mechanical engineering, automotive, explosion-hazardous areas, I&C technology and the food industry.

The basis of our success is the wide range of products, the high quality and the extensive machining service.



## **ROSE Systemtechnik GmbH in Hohenlockstedt**

At our location in Hohenlockstedt, we manufacture automation solutions for all areas of machine and process automation. Our product portfolio consists of robust panel PCs, industrial PCs and monitors as well as individual solutions for drive, control and safety technology.

## **ROSE Systemtechnik GmbH in Finow**

In addition to our operating and display devices, support arms and stand systems are manufactured in Finow. We configure these individually according to your specifications. Thus, panel PCs can be placed flexibly in the production and allow the operator an ergonomic height adjustment.



# **HMI SOLUTIONS**



## From the machine frame to the operator's finger

With the HMI Solutions product line, we offer you new possibilities in the design of the interface between man and machine. From the support arm to the housing system to the high-performance IPC, we offer you everything from a single source and all made in Germany!

## Content

---

<b>HMI SOLUTIONS</b>	S-Line – Industrial Panel PCs / Monitors	6
	CS-Line – Stainless Steel Panel PCs / Monitors	10
	Eco-Line	14
	Front-mounted Panel PCs / Monitors	16
	Modular PC Systems	20
	Industrial PCs and Embedded PC Systems	24
	Individual Complete Systems	26
	Examples for Customised Solutions	30
	Quick-release Mechanism „QuickLock“	32
	Control Enclosures	34
	Suspension Systems	38
	Stand columns	44
	Handheld enclosures	46
	Accessories	50
	Branch Solutions	52
	Display Technology	54
Contact	55	







## Complete solutions - everything from one source and „Made in Germany“

ROSE Systemtechnik has a wide range of robust and reliable HMI solutions available for you, including panel PCs, industrial PCs, industrial monitors, as well as suitable equipment carriers that ensure optimal and flexible working conditions. This makes our HMI Solutions holistic, because as a system supplier we accompany you from the very beginning and develop customized solutions based on our many years of user experience.

Our industrial PC systems are equipped with high quality and long-term available components. Strict quality control including a recorded burn-in load test and fully documented quality management are standard for us - for every single panel PC and industrial monitor.



Service

- Perfectly coordinated, integrated solution models
- Software integration
- Hardware upgrade as needed
- 24-hour burn-in endurance testing
- Completion of or help with your device certification
- Everything from a single source, 'Made in Germany'



Support

- Direct contact to a service technician
- Fast and friendly assistance for technical problems
- Professional hardware support
- Straightforward, no-quibble repair policy
- Personalised customer after-sales service







## S-Line Gen. 5 – Industrial Panel-PCs / Monitors

---

### Perfect Panel PCs – our contribution to Industry 4.0

The S-Line Gen.5 is the further development of our successful S-Line series. By using the new SL5000 modular profile system, we are able to meet a wide range of requirements, such as the integration of command devices, RFID reader modules, WLAN antennas and customer logos even in the standard version.

Added to this is the possibility of implementing completely customer-specific HMI solutions in almost any diagonal and in various installation depths. This opens up a wide range of options with regard to the integration of further modules, such as PLC or bus coupler modules. In addition to these new possibilities, proven attributes such as industrial-grade PCAP multi-touch, long-term available components with high MTBF time and high-performance, fanless IPC integrations are of course still retained. Innovative operator interfaces like these are critical to long-term competitiveness. Manufacturing Execution Systems (MES) take over the automatic planning, control and monitoring of your production, resulting in even more efficient process handling. A basic prerequisite for this, however, are powerful panel PCs.









## S-Line Gen. 5 – Industrial Panel PCs / Monitors



Technical Data

- Long-term availability of components
- Passively cooled design
- Service-friendly layout
- CPU from ARM to Intel Celeron up to i7
- 230V AC / 24V DC operating voltage
- Power consumption starts at just 15 W
- Wide range of operating systems e.g. Windows/ Linux



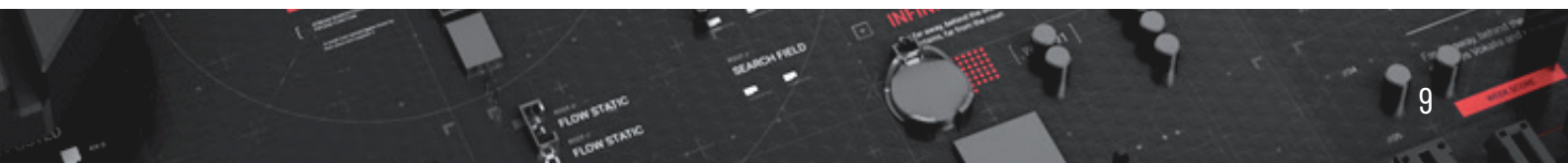
Display

- 18,5", 21,5", 23,8" (other sizes on request)
- Resistive or industry-optimised PCAP touch
- Multi-touch 'EagleEtch' screen – anti-glare glass
- Usable while wearing gloves, interference suppression
- Can be cleaned while running
- LED backlight
- High luminous transmission
- Wide viewing angles (horizontal / vertical): 189°H/V
- chemically antireflection coated GW95, different etching grades possible on customer request



Options

- RFID scanner
- Bluetooth, WLAN
- Conventional buttons, emergency stop
- Uninterruptible power supply
- Bussystems (Profinet, Arcnet, IO-Link, etc.)
- Enclosure in V4A stainless steel
- Acrylic film coating
- Individual connection boards
- Signal lights and handles







## CS-Line – Stainless Steel Panel-PCs / Monitors

---

### **Stainless steel panel PC with hygiene certificate – a sign for peace of mind**

The stainless steel panel PC offers a perfect example of combining a rugged build with a stylish design. Thanks to the IP69K rating, the PCs are completely dust-tight and can be high-pressure steamcleaned – even while they are still running. This makes our devices ideally suited for use in chemical, pharmaceutical, hygiene and food applications.

The completely enclosed enclosures are protected against contamination and cleaning is no problem at all, as the panel PCs can withstand water, disinfectants, and even acids and alkalis. By using a VESA mount or stainless steel flange, the PC can be quickly and securely mounted on any industry-standard suspension arm systems, stands or other fixing systems. securely.







## CS-Line – Stainless Steel Panel-PCs / Monitors



Technical Data

- Long-term availability of components
- Passively cooled design
- Service-friendly layout
- CPU from ARM to Intel Celeron up to i7
- 230V AC / 24V DC operating voltage
- Power consumption starts at just 15 W
- Wide range of operating systems e.g. Windows/ Linux
- Hygienic, food-certified seals
- No condensation due to special membrane



Display

- 18,5", 21,5", 23,8"  
(special sizes on request)
- Industry-optimised PCAP touch
- Multi-touch glass - chemically anti-reflective and hardened
- Glove operable, interference suppression
- Can be cleaned while running
- LED backlight
- High luminous transmission
- Wide viewing angles (horizontal / vertical): 189°H/V
- chemically antireflection coated GW95, different etching grades possible on customer request



Options

- Singleboard IPS
- Remote performance PC
- RFID-scanner
- Bluetooth / WLAN
- Conventional buttons, emergency stop
- Bussystems (Profinet, Arcnet, IO-Link, etc.)
- Enclosure in stainless steel V4A
- Acrylic film coating







## Eco-Line

### New design and innovative technic

Our new „Eco-Line“ is a fanless and energy-saving multi-touch panel PC. The development focused on low power dissipation, which is achieved by the Intel Celeron J1900 processor with just 10W power consumption and the economical LED backlight.

Slim, powder-coated aluminum enclosure with flush-mounted multi-touch glass front. The connection area is led out at the rear.



Technical Data

- Glass front with black decor
- Ingress protection IP65 on the front
- 33 mm deep enclosure
- Interfaces, rear: 1 x RS-232 COM1; 2 x USB; 1 x LAN
- 24V DC; Connection via screw terminal
- Rear VESA75 adaptation possible
- Celeron N4200 (4x 1,1 - 2,5GHz; 2MB L2 Cache;
- 6W power consumption; more powerful processors on request
- RAM: 8GB DDR3L
- Mass storage: M.2 SSD 64GB - 480GB



Display

- 15.6“(13,3”)
- Industrial PCAP touch
- Multitouch glass - anti-reflective and hardened
- Usable while wearing gloves, interference suppression
- Can be cleaned while running
- LED-Backlight
- High transmission
- Wide viewing angles (horizontal / vertical)









## Front-mounted Panel-PCs / Monitors

---

### **For installation in enclosures or control consoles/panels**

Robust, reliable and durable – the key features of our industrial panel PCs and monitors for installation in control consoles/panels, enclosures and building automation applications.

Our monitors for mounting have been designed to ensure they can be installed quickly and easily in enclosures or machine fronts. We naturally only include components offering maximum levels of efficiency. In addition, intelligent thermal management ensures balanced temperature conditions in smaller control cabinets. All our front-mounted panel PCs and monitors have been adjusted to the design of our 'S-Line' and 'CS-Line'.

### **No compromises thanks to modularity**

Our product portfolio for embedded applications offers an individual solution system for every user, tailored to performance class, control task complexity and budget. Whether you need 19" rack mounting, front mounting or an embedded PC – our PCs can be equipped with a matching CPU, system interfaces, PSU models and other options. And all available from single custom units right up to large-volume production.

Our devices are equipped with an industry-optimised PCAP touch user interface. This means devices can be cleaned while still running and ensures an excellent response for gloved operators, plus excellent luminous transmission and translucency.

### **We guarantee the straightforward installation of your panel PC**

Installing our industrial panel PCs into control panels/consoles or enclosures couldn't be easier. The device is simply slotted into the enclosure's prepared mounting cut-out from the front and the clamps are then placed into the designated recesses and tightened. The pointed ends of the bolts lock against the mounting wall to ensure the device installation is rock solid.







## Front-mounted Panel-PCs / Monitors



Technical Data

- Long-term availability of components
- Passively cooled design
- Service-friendly layout
- CPU from ARM to Intel Celeron up to i7
- 230V AC / 24V DC operating voltage
- Power consumption starts at just 15 W
- Wide range of operating systems e.g. Windows/ Linux



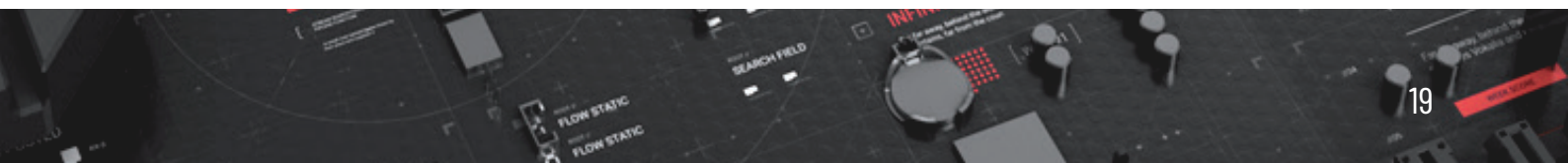
Display

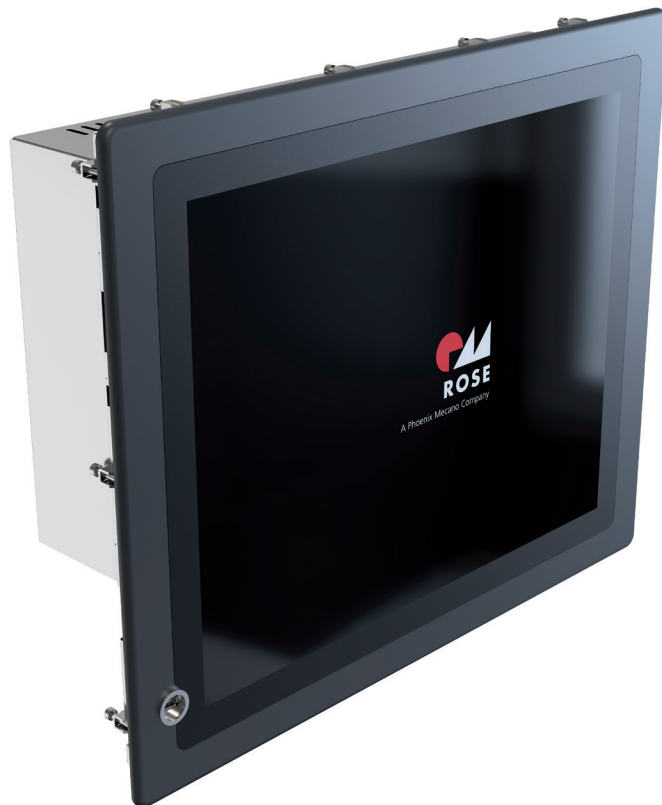
- 18,5", 21,5", 23,8" (other sizes on request)
- Resistive or industry-optimised PCAP touch
- Multi-touch glas - anti-reflective and hardened
- Usable while wearing gloves, Interference suppression
- Can be cleaned while running
- LED backlight
- High transmission
- Wide viewing angles (horizontal / vertical): 189°H/V
- chemically antireflection coated GW95, different etching grades possible on customer request



Options

- RFID scanner
- Bluetooth / WLAN
- Conventional buttons, emergency stop
- Bussystems (Profinet, Arcnet, IO-Link, etc.)







## Front-mounted Panel-PCs / Monitors

### Front-mounted panel PC, fully compatible with 5:4 and 4:3 devices of other premium automation-technology manufacturers

Our panel PCs for front mounting offer full mechanical and port compatibility with the 5:4 and 4:3 devices of premium automation-technology manufacturers, and can be fitted into existing mounting cut-outs/apertures without any mechanical or electrical modification work being necessary. Our flexibility means we can also customise any models in this device-range to your requirements, whichever specific version you need: single or multi-touch panel PC, rack mounting, front mounting, embedded PC.



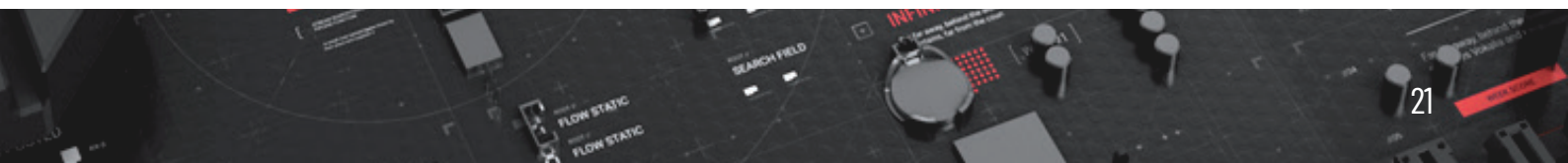
Technical Data

- 15" and 19" TFT display
- Resolution: 15" 1024 × 768 pixels  
19" 1280 × 1024 pixels
- Capacitive multi-touch
- CPU to Intel Core i-series
- IP65 rating at front
- Front-mounted USB port
- Ports: DVI-D, VGA, USB, RS-232, others on request
- 100–245V AC / 24V DC operating voltage
- Up to two PCI/PCIe slots



Options

- In addition to the standard interfaces, other communication interfaces can also be integrated
- Soft keys
- Profibus
- Profinet
- Windows 10







## Modular PC Systems

### Industrial panel in a robust aluminium enclosure - with modular system components

Due to our innovative concept, the system components such as display, computer unit and power supply can be replaced individually at any time by the customer. In addition, this system offers individual installation and configuration options - so you get a device that is perfectly tailored to your needs. Customized wiring and coating are also part of our services.

The robust aluminum housing can be locked against unauthorized access by means of a customer-specific lock. Simply select from various configuration options what suits your needs, for example...



#### Technical Data

- 21.5" LED TFT, resolution 1920 × 1080 pixels
- Industry-optimised PCAP multi-touch screen, glass surface
- Long-term availability of PC components
- CPU up to Intel Core i7
- Hard disk: 2x SSD 2,5"
- Interfaces: 2x Gbit LAN, 1x RS-422/485, 4x USB3.0, 1x HDMI
- 1x PCIe x1 interface free via riser card
- ARaid controller, incl. hot-swap frame
- Industry-optimised 90-245V AC power adapter



#### Options

- RFID scanner
- Bluetooth
- Acoustic touch feedback
- Uninterruptible power supply
- Interface expansions
- Rear-mounted split cable gland
- VESA 100 interface





# Industrial PCs and Embedded PC Systems

---

## Embedded PC systems for industrial applications

Our industrial box PCs are characterized by their compact dimensions and flexible installation options. The variety of available components allows an extremely variable configuration. In addition, all PCs can be effortlessly integrated into existing systems for control, signal processing in measurement technology or visualization.

For all our device series, including the box PCs, we also offer individual special solutions. Especially for larger quantities, we are happy to develop a PC that is exactly tailored to your specific technical requirements. In this case, the form factor of the mainboard, the expansion bays and interfaces, the IP protection class and cooling as well as the mounting can be adapted. In addition, the selection of PC components is extremely flexible within the scope of our procurement options.

Before delivery, all our industrial box PCs undergo a thorough 24-hour burn-in test to withstand even extreme loads.





### Worker PC

- Wide range of configuration options
- Fanless design
- Two quick-change 2.5 „SSD hard drives
- ARAID (intelligent RAID system) available



### 19" Rack-Industrie PC

- Many configuration options
- Any ATX motherboard can be installed
- 19" Rack mounting
- Optional for rail guidance



### Box-PC

- Completely passively cooled box - IPC
- Integration of various mainboards in the 3.5"-Format (Intel Atom to Intel Core i7 8th gen.)
- Optional integration of a DC / DC converter or 230V AC power supply
- Opt. switch cabinet mounting (rear wall or book mounting position) with mounting brackets
- Top hat rail mounting



### Desktop industrial PC

- Customer-configurable
- Compact footprint
- Optimum PC performance
- Any Mini-ITX board can be installed

### Accessories

Various mounting plates and mounting brackets available







## Individual Complete Systems

---

**The trend towards individualized products and ever shorter manufacturing times is driving the automation of many industries. With its ready-made control housings, ROSE Systemtechnik has long been creating the ideal conditions for this. By taking over CRE Rösler Electronic GmbH, the company now offers its customers complete HMI solutions from a single source.**

CRE products can be found as a new product line “HMI Solutions” at ROSE. The „HMI Mechanics” product line includes the classic support arm and control housing range.

HMI Solutions manufactures industrial panel PCs, industrial monitors and embedded PCs for numerous industries such as the automotive industry, the food industry as well as logistics and building automation. ROSE HMI Solutions offers a wide range of products, ranging from one-off production to large series. Development and production take place in-house, so that perfect quality is always guaranteed.

### **Innovative technology, elegant design: the industrial panel PCs**

Industrial Panel PCs from HMI Solutions are available as a standard version or a customer-specific solution that is precisely tailored to the respective application. Both versions have a robust aluminum housing and are available as touch, multitouch or button devices with different display sizes.

### **Equipment carrier systems: Ergonomic and robust**

In recent years, ROSE has increasingly developed from a pure component manufacturer to a system provider. The company has now partially or completely equipped most of its housings with customer-specific electronics. The extensive range of support arm systems made of aluminium, steel or stainless steel also underlines the system character.

### **HMI systems from ROSE - everything from a single source**

With the expansion around the new location in Hohenlockstedt, ROSE's customers benefit from a very large range of panel PCs, industrial monitors and equipment rack systems that have the right solution for every application. The comprehensive machining service with individual drillings, paintwork and assemblies makes the all-round carefree package perfect.







## Customer-specific industrial PCs

Our modular design principle means we can implement your solution flexibly and cost-effectively while offering extensive specialist technical advice. This gives you a direct path to your bespoke solution

– and all from a single source, **'Made in Germany'**.

We offer products of a consistently high quality – from individual custom builds to large-volume products runs, and from panel PCs to industrial box PCs.

Our stringent quality control includes burn-in endurance testing with full record-keeping and quality management with end-to-end documentation as standard

## Optional equipment and accessories for industrial use

The extensive range of accessories for our panel PCs have been especially developed for industrial use and offers customised configuration for any application. This enables IPCs to be an even better match for their application scenario.

Specially designed keyboards that can be fitted onto or integrated into a panel PC not only make data entry easier but also offer a more ergonomic working environment for operators.

The range of accessories we offer includes a selection of cables, connectors, PSUs and adapters.

From planning and advice to turnkey delivery – we are your trusty travelling companion on the road to Industry 4.0.

- Professional, expert advice and assistance – from the idea to installation
- Immediate, on-site requirements/solution analysis
- Expertise born of long experience
- A shared approach to solution development
- In-house development unit – for rapid implementation of your individual solution
- Cutting-edge technologies and long-term availability of all components
- Flexibility – quick and reliable
- One-stop service provision – including on-site installation if required

**We will be happy to provide you with reliable, competent advice to find your ideal solution. Discover the unlimited options for modification at particularly attractive conditions.**



## Examples for Customised Solutions



### 13.3" stainless steel industrial Panel PC

- Slimline stainless steel housing with welded tube at rear for internal connections
- Display with LED backlight and touchscreen
- 13.3" in a 16:9 format - 1920 x 1080 pixels
- Intel Celeron J1900, 4x2 GHz
- Hard disk: SSD 128 GB Samsung pro



### Control panel with industrial tablet PC

- Docking station incl. mechanical mounting
- Tablet-PC 11.6"
- NFC integrated behind Porsche emblem
- Siemens KP32 keypad



### 42" Panel PC

- All-glass front with industrial PCAP touch
- Fanless pc integration
- RFID reader
- Protection class IP65 360°
- Slight design - only 45 mm depth
- Print on the back of glass with company logo



### Panel PC in custom enclosure

- Individual aluminium enclosure
- 21,5" Full HD Multitouch Display
- Individual and variable buttonlabels behind glass
- RFID Card Reader and camera behind frontglass
- Emergency off button integrated in frontglass
- VESA 100 attachment for suspension system



### 21.5" Dual Panel PC

- 21.5" Dual display
- Flush PCAP integration
- Side handle
- Floor-side console with keypad
- Push button integration with emergency stop
- Euchner scanner



### Panel PC 23.8" with control panel area in portrait format

- Milled enclosure body in individual design
- Flush-mounted membrane keyboard with flexible labeling fields
- PCAP cover glass with RFID reader and illuminated customer logo
- Fanless IPC integration



### V4A stainless steel operating terminal

- 19" display
- Customised mechanics
- Connection via HARTING plug connections
- Individual number and arrangement of control devices
- Ingress protection IP65



### Special height adjustment system

- Individual stroke of 1000 mm
- VESA connection for Panel PC
- Including 10 ° inclination adapter and rotating coupling
- Continuous equipotential bonding available
- Increased swivel range on the wall joint









## Quick-release mechanism „QuickLock“

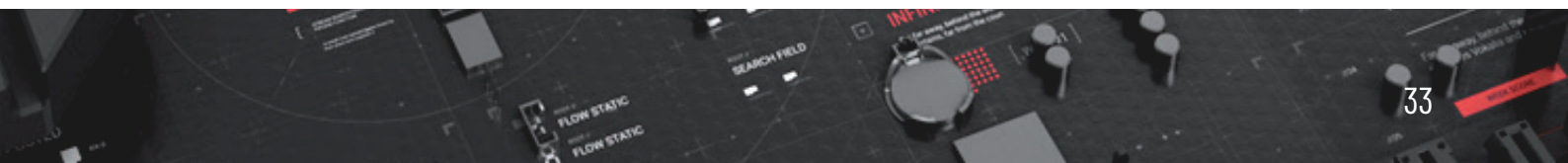
---

### High availability thanks to patented quick-release mechanism

Production time is money – and downtime due to faults is very expensive. But this can be minimised, thanks to our patented ‘QuickLock’ mechanism. One person working alone and without tools can swap out a panel in 10 seconds: position, lock into place – ready. Mechanically, pedestal or suspension arm mounting is possible, at various angles of pivot and tilt. The PC ports and interfaces are easily accessible in the generously proportioned, lockable terminal compartment, while being securely protected from unauthorised personnel.

### Benefits of our quick-release adapter

- Can be installed on suspension arm systems in a few seconds – just fit and lock into place
- No tools required
- Anti-theft protection (E1 or other closure) and detent on locking bolt
- Continuously adjustable rotate/tilt function with end stop (20° up/down and 350° left/right)
- One-person panel installation and replacement
- All connections can be pre-installed (depends on suspension arm system)
- Large terminal compartment with various interfaces
- Can be fitted to all 48 mm Ø, GTN II suspension arms
- Additional preconfigured hardware connection options







## Control Enclosures

---

### Control and display enclosures for many different applications

In the area of operating and display enclosures, they can choose from various aluminum and stainless steel variants. The following models are particularly popular.

Our SL 4000 is one of the most modular control housing systems on the market and protects the internals with IP65 protection. Height and width of the aluminum enclosures are manufactured individually according to customer requirements. The handle bar integrated in the profiles simplifies the handling of the system. With the SL 4000, various profile combinations allow different installation depths and door designs to be realized.

The SL 2000 is based on aluminum profiles with die-cast corner elements in a timeless design. A wide circumferential frame serves as a handle strip and, in combination with an external plastic strip, protects the control fixtures particularly effectively. The protection class according to EN 60529 is IP65.

The SL 5000 control enclosure clearly stands out due to its modern design, yet still impresses with its high flexibility and modularity. Four different aluminum profiles in combination allow a wide variety of applications - optionally as door design to the front or to the rear. The housing offers very high strength, which means that a wide variety of dimensions can be realized.

For all control enclosures made of aluminum profiles, we offer an individual processing service starting from one piece, such as individual dimensions, mechanical processing of front panel, rear panel and side profiles, individual coloring and assembly according to customer specifications, up to the complete system.

The advantage of aluminum control enclosures over steel enclosures is their heat dissipation capability. This eliminates the need for additional elements for cooling.

The C450 stainless steel control enclosure offers a simple alternative to costly in-house solutions. The high surface quality, the high-quality handle variants and the large selection of different sizes distinguish the C450.





## Control enclosures



### Product highlights


#### SL 5000

- Modern enclosure system for all common control and display installations
- Flexible size variability in height and width, with 4 enclosure depths
- Easy to assemble and operate door hinge and locking system

#### SL 4000

- Modern enclosure system for control and display systems
- Flexible size variability in height and width, 6 enclosure depths
- Easy to assemble and operate door hinge and locking system
- Integrated handle system

### Technical data

Material	Aluminium	Profile: DIN EN 573 EN AW-ALMgSi Cast corners: DIN EN AC-AISI 12 Cu 1 (Fe)
Ingress protection	IP54 nach EN 60529	IP65 to EN 60529
Seal	CR-round seal	CR or PU foam
Surface	Powder coating	Powder coating or natural anodised
Colour	RAL7035 / Individual coloring	Profile: optional RAL 7035, light grey, or natural anodised Corner element: optional RAL 7035, light grey, or RAL 9007, grey aluminium Special colour on request
Temperature range	-30 °C to +80 °C	-30 °C to +80 °C
Approvals		
Mounting depth	40 mm - 270 mm	55 mm to 270 mm
Accessories	Handles Signal lights Service interfaces Adapter plates Closure plates	Handles Wall holder Aerator set Keyboard drawer Data interfaces
Included in delivery	Enclosure body incl. front panel, rear panel, seals and fastening elements	Complete enclosure system incl. corners, seals, fixing elements, rear panel or door, front panel fixing set.



### SL 3000


- Universal control enclosure for automation engineering
- Variable size in height, width and depth
- Hinged door profile at front and rear
- Front panel insertion from front and rear

### SL 2000

- Enclosure system for control and display fittings
- Variable size available in width and depth
- All-round adaption capabilities for accessories
- Front panel insertion from front and rear

### Commander 450

- Stainless steel Commander for industrial controls
- Outstanding price / performance ratio
- Individual handle systems
- Size: 400 x 300 x 120 mm to 500 x 500 x 200 mm

Profile: DIN EN 573 EN AW-AMgSi Cast corners: DIN EN 1706 EN AC-AISI 12 Cu 1 (Fe)	Profile: DIN EN 573 EN AW-AMgSi Front plate, rear wall: DIN EN 573 EN AW-AMg3 Corner: DIN EN 1706 EN AC-AISI 12 (Fe)	Stainless steel 1.4301/304 other materials on request
IP65 to EN 60529	IP65 to EN 60529	IP65 to EN 60529
CR or PU foam	CR seal	VMQ-(Silicone)
Powder coating or natural anodised	Powder coating	grinded, grain 240
RAL 7035, light grey	RAL 7035, light grey Handle tube: powdered RAL 3003, ruby red	
-30 °C to +80 °C	-30 °C to +80 °C	-40°C to +80°C
		
60 mm to 675 mm	155 x 483 mm to 267 x 483 mm in 3 enclosure depth: 90 mm, 120 mm, 195 mm	400 x 300 x 120 mm to 500 x 500 x 200 mm
Handles Coupling flange Adapter plate Locking plate Keyboard drawer Data interfaces	Handle set Coupling flange Control attachment set	Handle / handle set
Enclosure body with rear wall, fixing elements, cover profile with corners	Enclosure body with rear panel or door, front panel fixing set, cover profile and T-groove cover	Enclosure with door, handles (order separately) and individual machining for installation and suspension system







## Suspension Systems

---

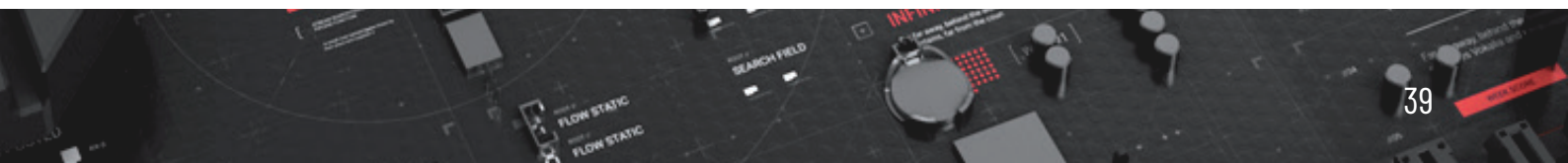
### **Ergonomic workplaces through suspension systems**

ROSE supplies a large range of aluminium, steel and stainless-steel supporting-arm systems which can be individually tailored to your needs.

The focus here is primarily on the suspended load and the required reach, and also on system styling. ROSE can supply eleven different systems, based on aluminium profiles, steel or stainless-steel tubing, with a load range from 0 to 200 kg and a maximum reach of 3.00 m.

ROSE cuts the profiles/tubes individually to length for you.

The supporting-arm systems are augmented by height-adjustment systems for ergonomic workplace design, up to a maximum suspended load of 60 kg.





## Suspension systems



### Product highlights

#### GTS

- Aluminium profile suspension system for light/ medium loads up to 30 kg
- Combined with all Commander systems
- Adjustable version for individual loads

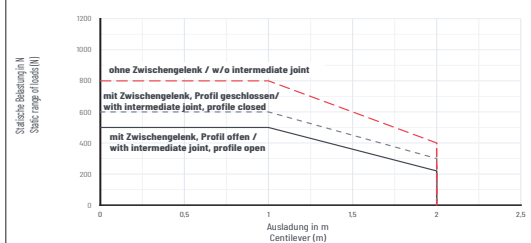
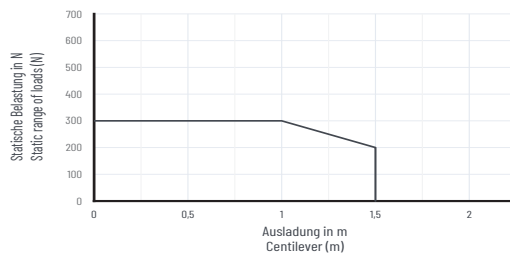
#### GTN II

- Design aluminium suspension system
- Closed profile system / profile with free accessible cable duct
- Can be combined with all control enclosures

### Technical data

Material	Connecting tube: DIN EN 573 EN AW-AMgSi Components: DIN EN 1706 EN AC-AISI 12 (Fe)	Connecting tube: DIN EN 573 EN AW-AMgSi Components: DIN EN 1706 EN AC-AISI 12 (Fe) Cover profile: TPE
Ingress protection	IP54 to EN 60529	IP54 to EN 60529
Seal	CR or PU foam	CR or PU foam
Painting	Tube, components: RAL 7035, light grey	Tube, components: RAL 7035, light grey Cover profile: RAL 9005, jet black
Surface	Powder coating	Powder coating
Free cable passage	Connecting tube: 53 x 19 mm System components: 53 x 19 mm	Connecting tube: open 51 x 34 mm Connecting tube: closed 55 x 56 mm System components: 53 x 48 mm
Temperature range	-25 °C to +60 °C	-25 °C to +60 °C
Max. static load	30 kg/1 m	80 kg/1 m

### Load diagram







## Suspension systems



### Product highlights

#### GTL

- Aluminium profile suspension system for heavy loads
- Can be combined with GTN II suspension system/ heightadjustment system GTV and control enclosures
- Optional adjustment for horizontal alignment of the profile

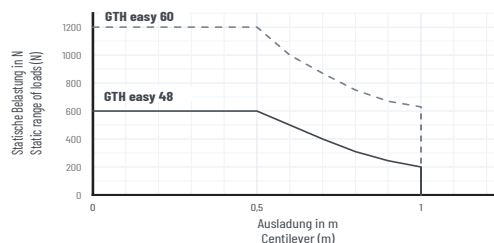
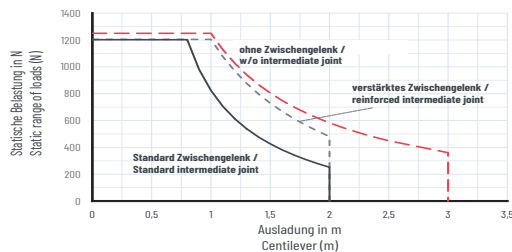
#### GTH 48 easy / GTH 60 easy

- Compact, slim design
- Significantly reduced installation effort
- Ideal alternative to self-made construction solutions
- Reduction of edges and gaps of the system and less dead space

### Technical data

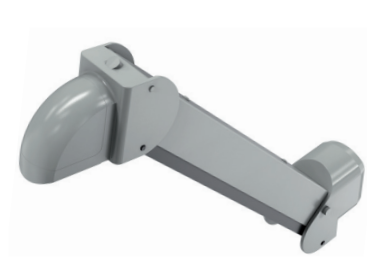
Material	Connecting tube: DIN EN 573 EN AW-AMgSi Components: DIN EN 1706 EN AC-AISI 12 (Fe) Cover plate: PS	Tube: Stainless steel 1.4301 System components: Stainless steel 1.4301
Ingress protection	IP54 to EN 60529	IP69 to EN 60529
Seal	CR or PU foam	CR or PU foam
Surface	Powder coating	Tube: grinded, grain 240
Colour	Tube and components: RAL 7035, light grey Cover profile: RAL 9005, jet black	
Free cable passage	Tube and components: $\varnothing$ 70 mm	GTH 48: 41 mm GTH 60: 53 mm
Temperature range	-25 °C to +60 °C	-25 °C to +60 °C
Max. static load	125 kg/1 m	GTH 48: 80 kg/0.5 m - GTH 60: 120 kg/0.5 m

### Load diagram





## Height adjustment systems



### Product highlights

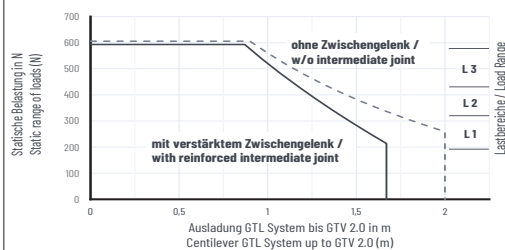
- Step less adjustment
- Adjustable end stops
- Adjustable load range
- Possible subsequent integration into existing GTN II system

- Height adjustment system for ergonomic Workplace design
- Can be combined with equipment carrier systems GTL / GTN II and control enclosures
- Lockable or freely positionable version guide

### Technical data

Material	Profiles: Extruded aluminum profile Connection components: DIN EN 1706 EN AC-AISI 12 (Fe) Cover caps: PA 6	Connecting plates: S235 Components: EN 1706 AC-4600DF Cable channel cover sheet: EN 573-3 AW-5754 H22
Ingress protection	IP54 to EN 60529	IP40 to EN 60529
Load range	5 - 25 kg	20 - 60 kg
Life time	20.000 double strokes	25.000 double strokes
Colour	Diecast components: RAL 7035, light grey Profile: natural anodised Caps: RAL 7016, anthracite Other colours on request	Connecting plates: RAL 7016 Cast parts: RAL 7035 Cable channel cover sheet: RAL 7035
Surface	Powder coating	Powder coating
Free cable passage	approx. 40 x 20 mm	approx. 40 x 30 mm
Temperature range	0 °C to appr. 80 °C	0 °C to appr. 80 °C
System length	454 mm, 573 mm, 714 mm (depending on weight classes)	1050 mm
System stroke	400 mm, 600 mm, 800 mm	400 - 961 mm

### Load diagram





## Suspension systems



### Product highlights

- Industrial circular tube system for control enclosures
- Modular construction for individual components
- Protected internal cable routing

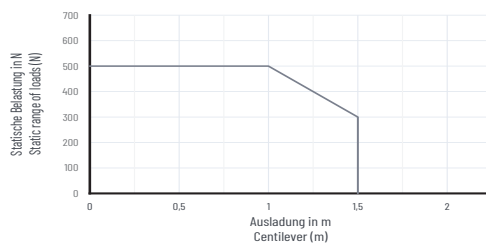
### Flat Panel Adapter

- Turn-tilt coupling for the individual connection between the enclosure and ROSE suspension systems
- Optional inclination range of +/- 20°
- On request, we process the adapter individually and, for example, drill holes in the sides of the connection space, e.g. for cable glands

### Technical data

Material	Connecting tube: Steel 48 x 4 mm DIN 2393-St. 37 Components: DIN EN 1706 EN AC-AISI 12 (Fe)	Connection compartment: Stainless steel 1.4301 Inclining adjustment: Stainless steel 1.4301 Deckel: ABS
Ingress protection	IP54 to EN 60529	with GTS coupling: IP54 with GTH coupling: IP65
Dichtung	CR or NBR	CR or NBR
Surface	Powder coating	Powder coating
Colour	Tube: galvanized Components: RAL 7043, traffic grey B Special colour on request	Connection compartment: RAL 7035, optional special colour Inclining adjustment: RAL 7035, optional special colour Lid: RAL 7021
Max. static load	50 kg	25 kg
Free cable passage	Connection tube: 40 mm diameter System elements: 40 mm diameter	GTS: 53 x 19 mm GTH: Ø 41 mm

### Load diagram







## Standing pillar

---

**Ideal working conditions thanks to a wide range of connection options and high flexibility.**

Operating units in industry must be easily accessible and operable for the worker at all times. This is very easy with the new family of pedestals from ROSE: The system offers a wide range of connection options and can be optimally adapted to the body size of the operating personnel.

- Various connection options
- High flexibility
- Manufacturing of individual heights



Options

- VESA-100- and VESA-75-interfaces
- Connection Adapter (Flat Panel-Adapter)
- Support arm couplings
- Mounts for mobile devices
- Integration of signal lights
- Extension Box
- Mounting of command devices
- Connection of IPCs or control enclosures to standing pillar
- Mobile stand systems (Moterm I + II)







## Handheld enclosures

---

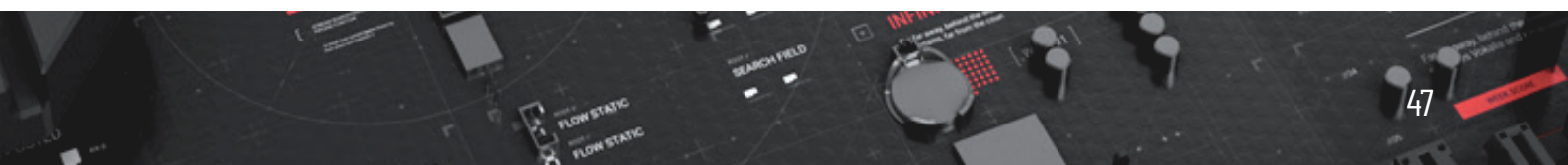
### Handheld enclosures for optimum production processes

Handheld enclosures are used both in everyday life and in industrial environments in a wide variety of applications and also facilitate countless production processes. The decentralized operator stations are gaining more and more value in machine and control engineering and are required for setup and operation work.

In our product portfolio you will find a diverse selection of different designs, adapted to a wide range of applications. Operate from where you have the best view of the process.

We have extensive experience in the field of individual installations and assembly. Thereby our competences are mainly in the installation of:

- Power supplies
- Operating and control elements
- Membrane keyboards
- Displays, supply and data lines
- I/O modules
- Ethernet components

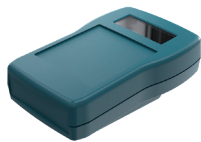




## Handheld enclosures

### Taguan

Due to their special design, Taguan handheld enclosures offer the greatest possible variety of installation options, such as: scanners, measuring sensors, chip or magnetic card readers, PCMCIA slots, and much more.



- ABS handheld enclosure for Data Acquisition & Instrumentation
- With integrated battery/rechargeable battery compartment
- Version with or without display opening
- Protection class IP40 according to EN 60529
- Ingress protection IP40 according to EN 60529

### Beluga

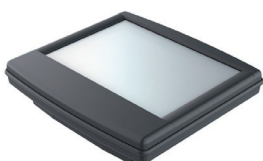
The Beluga enclosure facilitates the setup and control of plants and increases flexibility in the production process. Thanks to their robust design and high degree of protection, the housings offer ideal conditions for use in a wide range of applications.



- Polyamide handheld enclosure for MSR and automation technology
- Design with or without display opening
- Prepared to accept membrane keypads/silicone keypads
- Optional EMC version with internal coating and EMC seal
- Ingress protection IP65 according to EN 60529

### Limanda

The Limanda enclosure system can be used both mobile and stationary. The housing, made of polyamide, is self-extinguishing (according to UL 94 V-2) and has a surface resistance of 1012 ohms (according to IEC 60093). Displays, controls, membrane keyboards, etc. can be accommodated via the front panel.



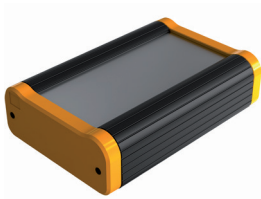
- Polyamide handheld enclosures for data acquisition, instrumentation and control and automation technology
- For mobile and stationary installation and control devices
- Variable installation depths
- Ingress protection IP65 according to EN 60529





## Pilot

Our 4 Pilot enclosure families are not only our true all-rounders in the field of manual operating enclosures, but have also been impressing customers for over 40 years with their durability, high degree of protection and consistently high quality. The robust operating enclosures can be found in a wide range of indoor as well as demanding outdoor applications. The pilot enclosure offers ideal installation options for electronic and electromechanical components.



### Pilot 50

- Polyamide handheld enclosure
- Large installation space
- Length variability due to profile technology
- Robust design
- Ingress protection IP65 according to EN 60529



### Pilot 250

- Polyamide handheld enclosure
- Large installation space
- Version with closed or front frame cover
- Battery compartment at the rear
- Optional EMC version with internal coating and EMC sealing
- Ingress protection IP65 according to EN 60529



### Pilot 10/20/30

- Polyamide and polyester handheld enclosure
- Robust design
- Version with handle and integrated cable passage (Pilot 10, 20 standard)
- Ingress protection IP65 according to EN 60529



### Pilot 110-150

- Polyamide handheld enclosure
- Version with handle and integrated cable passage
- Large installation space
- Ingress protection IP65 according to EN 60529





## Accessories

### Optional equipment and accessories for industrial use

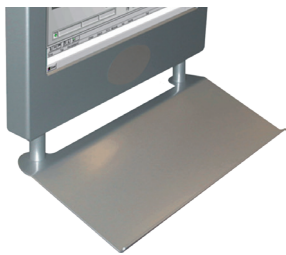
The extensive range of accessories for our panel PCs has been specially developed for industrial use and offers customised configuration for any application. This enables IPCs to be an even better match for their application scenario.

Specially designed keyboards that can be fitted onto or integrated into a panel PC not only make data entry easier but also offer a more ergonomic working environment for operators.

VDU-based workstation. The range of accessories we offer here includes a selection of cables, connectors, PSUs and adapters.

We will be happy to provide you with reliable, competent advice to find your ideal solution.

Discover the unlimited options for modification at particularly attractive conditions.



### Tray for keyboard/input elements

Tray with an approx. 20° angle for installation under the display unit, naturally anodised aluminium. The same design as the Panel PC including assembly accessories: M6 bolts, spacer tubes and hook-and-loop tape for affixing the keyboard.



### Keyboards

In the field of control technology, we offer a selected range of standard keyboards for specific applications:

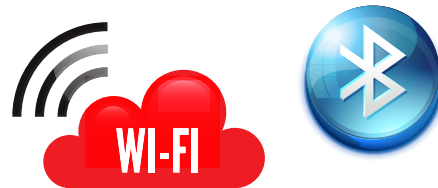
- long-stroke industrial keyboard IP65
- Cherry keyboard with integrated trackball
- stainless steel keyboard with integrated trackball, IP65



### Touchscreen input pen

Touch pens offer more precise operation than fingers, since only the thin tip touches the screen.

- touch pens with holder for resistive touch screens
- aluminium touch pens with holder for capacitive touchscreens



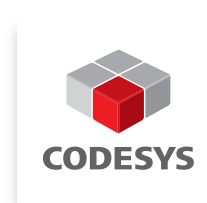
### WIFI / Bluetooth

Communicate wirelessly with the control network in the harsh industrial environment via wireless LAN and / or Bluetooth. We integrate modules with the latest industry standard protocols into our panel PCs.



### Electronic key system (Euchner)

EKS allows for electronic access management and control of processes and software applications. EKS is an open and freely configurable system with a wide range of interfaces and software tools.



### CODESYS, Singleboard & Web Config

A large number of our devices will also be available in the future as a web client (HTML5) based on Linux. In addition, in combination with CODESYS, numerous possibilities for visualization or soft PLC functionality will also open up for all other models.



### Inlaid membrane keyboard

For customer-specific operating panels, the front can be equipped with an inlaid membrane keyboard and/or additional user controls. The membranes are printed based on requirements and the mechanical layout of the keyboard.



### RFID tag reader

Our tag readers support all important 13.56 MHz and 125 KHz + UHF RFID as well as smartcard systems with up to 70 mm scanning distance. Supported card systems: Mifare, Legic, ISO 14443 A/B, ISO 15693, I-Code HITAG





## Industry-specific Solutions

### The perfect solution for any kind of application

Our industrial PC systems can be found in use anywhere computerised control units are deployed to manage machines, plant and processes. In the context of the Fourth Industrial Revolution, panel PCs, data processing and manufacturing already play a crucial role. The technology is focused on the future and has further potential for innovation in multiple scenarios – whether in the service of energy efficiency, process optimisation in terms of manufacturing intensity or making employees more productive. Industrial and panel PCs have already become an essential part of the enterprise toolset, and their importance is set to grow even further.



### Automotive and traffic systems

New project fields, new technologies – our competent automotive team is at your side as a complete interface coordinator during your development project. Benefit from our many years of experience with leading carmakers, from establishing initial contact through to the complete implementation of our equipment as part of your production process – our worldwide service for you.



### Food and beverage industry

Safety standards are paramount in this industry and demands on technology are especially high. Where production processes or workflows need to meet hygiene standards, the very greatest care is required, since there is a large volume of legislation, rules, regulations and specifications to be accounted for. Our stainless steel panels fulfil all of these requirements and have German Social Accident Insurance “Hygiene-tested” certification.



## Manufacturing Execution Systems (MES)

MES pave the way to Industry 4.0. They increase efficiency by taking over the automatic planning, control and monitoring of production, collecting a whole lot of information in the process. Panel PCs from ROSE Systemtechnik form the optimal basis for this, as they can withstand the harsh environment of a production, process the data quickly and are fail-safe.



## Manufacturing and production

Unexpected downtime has an immediate impact on the efficiency of production plant and systems. Accordingly, reliability and failover protection are absolutely essential for the control panels used in production processes. Thanks to the robust design of our industrial PCs, they can be installed in close proximity to production machinery. Any and all information can be accessed and visualised in real time.



## Pharmaceuticals and chemicals

On the surface, digitalisation now seems complete in many sectors within the chemicals industry. Yet the real changes that will become possible by large volumes of data, high-performance processing and new algorithms are still to come: our rugged stainless steel PCs easily meet the stringent requirements of the tough industrial working environment and are certified for use in Ex Zone 2 and 22.



## Warehousing and logistics

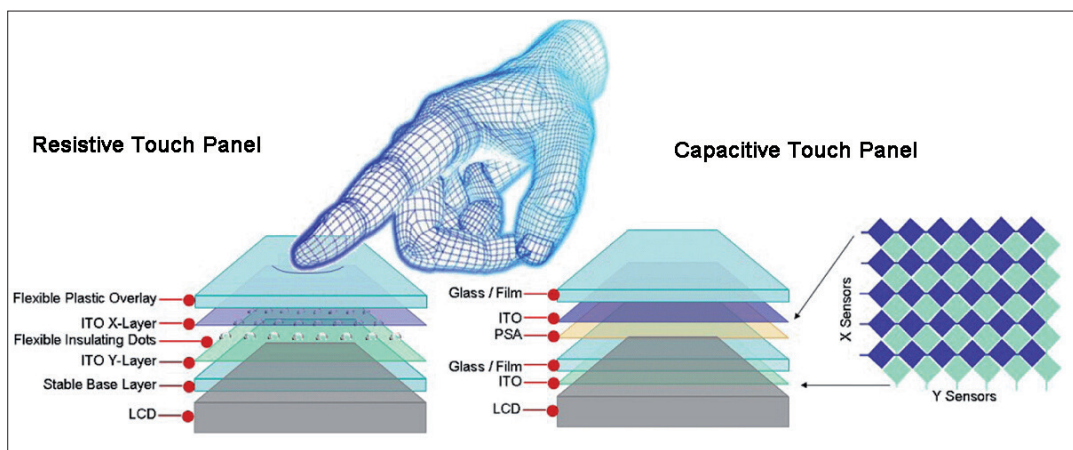
Whether indoors or outdoors, tough working conditions are typical in logistics and warehousing. We therefore designed our mobile PCs especially for these requirements: all of the information can be viewed and posted while out in the field, meaning that data transfer is always up-to-date. Our PCs can also be installed into industrial trucks, and are entirely unaffected by rough handling, vibration or sudden shocks.



# Display Technology

## Touchscreen

A touch screen offers simple and intuitive functions for the operation and monitoring of plant and machinery.



Resistive touchscreens react to pressure, which connects two electrically conductive layers at a specific point. This technology ensures easy operation using fingers, gloved fingers and pens. The surface is relatively resistant to dirt and is usually made of plastic.

Industry-optimised PCAP touchscreens are a capacitive touchscreen variant. These touch sensors consist of rows and columns of transparent, conductive material applied to a support layer made of glass or PET. If a voltage is applied to this pattern of rows and columns, a uniform, measurable electrostatic field is generated. If a conductive object, e.g. a finger, approaches the touch surface, the electrostatic field is interrupted at this point. This can be measured and reported on in terms of production capacity changes.

### Advantages in comparison to a conventional PCAP touchscreen:

- Unaffected by liquid splashes/spills
- Cleaning is possible during use without activating the touch interface
- Palm rejection: the touch function is not triggered by a palm press – up to five finger entries are evaluated simultaneously by the controller
- Can still be operated while wearing gloves
- High transmission - better light permeability
- Higher EMC resistance



## Contact

---



■ **Peter Schiller**  
Vertriebsleiter HMI Solutions /  
Key Account Manager Automotive  
☎ +49 4826 37666 36  
✉ peter.schiller@rose-pw.de



■ **Michael Bieg**  
Dipl.-Ing. (FH)  
Technical Sales Industry  
☎ +49 4826 37666 48  
✉ michael.bieg@rose-pw.de



■ **Martin Cordes**  
Technical Sales Industry  
☎ +49 4826 37666 46  
✉ martin.cordes@rose-pw.de



■ **Beatrice Kahlki**  
Technical Sales Industry  
☎ +49 4826 37666 43  
✉ beatrice.kahlki@rose-pw.de



■ **Patrick Krohn**  
Service & Support  
☎ +49 4826 37666 60  
✉ patrick.krohn@rose-pw.de



■ **Jochen Lindemann**  
Dipl.-Ing.  
Key Account Manager Automotive  
☎ +49 173 2944012  
✉ jochen.lindemann@rose-pw.de



■ **Stefan Conrad**  
Sales Manager HMI Solutions  
☎ +49 175 5949 441  
✉ stefan.conrad@rose-pw.de



■ **Patrick Bartsch**  
Inside Sales Specialist HMI  
☎ +49 571 5041 151  
✉ patrick.bartsch@rose-pw.de



■ **Tobias Büsching**  
Productmanager HMI  
☎ +49 571 5041 409  
✉ tobias.buesching@rose-pw.de



■ **Jan Paulsen**  
Productmanagement & -development  
☎ +49 4826 37666 33  
✉ jan.paulsen@rose-pw.de



10/2023

**ROSE Systemtechnik GmbH**

Hohenlockstedt Facility  
CRE-Allee 1  
D-25551 Hohenlockstedt  
Fon +49 4826 37666 0  
E-Mail hmi@rose-pw.de

[www.rose-systemtechnik.com](http://www.rose-systemtechnik.com)



A Phoenix Mecano Company